

The ATE Survey

Top Strategies to Use Survey Data to Strengthen Projects and Proposals

Lee McClure

Program Manager, Research – ATE Survey

lee.mcclure@wmich.edu



ATE EVALUATION RESOURCE HUB

ATE Survey Resources:



Using ATE Survey Data
to Strengthen Projects
and Proposals

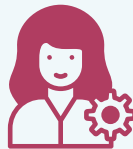
Spark Creative Ideas
for New Activities

Advocate for ATE
Projects and Activities

Proposal Writing

College Readiness is at a 30-Year Low

10% of Project Support Readiness for STEM Higher Education



Career Days / Fairs



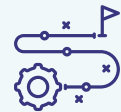
Work Coops



Summer Camps / Bridges



Transfer Workshops



Certification Pathways



Dual Enrollment / Early
College Credit



Professional Skills Training



Research Experiences



ATE Survey Resources

McClure, L., Sturgis, E., Al Mahi, S., Green, M., Becho, L., Wingate, L. A., & Gullickson, A. (2025). ATE survey 2025: Findings from the annual survey of principal investigators in the National Science Foundation's Advanced Technological Education program. The Evaluation Center, Western Michigan University. <https://atesurvey.evalu-ate.org/>



Using ATE Survey Data
to Strengthen Projects
and Proposals

Spark Creative Ideas
for New Activities

Advocate for ATE
Projects and Activities

Proposal Writing

Industry Collaborations with ATE Projects

Identify Workforce Needs



Serve On An Advisory Board



Review or Advise on Curriculum



Assist with Instruction



Provide Educators with Occupational Experience and Training



Provide Opportunities for Workplace-Based Learning



Provide Monetary or In-Kind Support for Program Sustainability



Support Business Incubation or Entrepreneurship



Sponsor Research



ATE Survey Resources

McClure, L., Sturgis, E., Al Mahi, S., Green, M., Becho, L., Wingate, L. A., & Gullickson, A. (2025). ATE survey 2025: Findings from the annual survey of principal investigators in the National Science Foundation's Advanced Technological Education program. The Evaluation Center, Western Michigan University. <https://atesurvey.evalu-ate.org/>



Using ATE Survey Data
to Strengthen Projects
and Proposals

Spark Creative Ideas
for New Activities

Advocate for ATE
Projects and Activities

Proposal Writing

127 ATE projects developed or modified over 5,460 educational
materials in 2024



1,360 Modules



1,030 Assessments



650 Lessons Plans



590 Lab Experiments



400 Course Curricula



220 Case Studies

Other materials include: instructor guides, program curricula, & textbooks.



ATE Survey Resources

McClure, L., Sturgis, E., Al Mahi, S., Green, M., Becho, L., Wingate, L. A., & Gullickson, A. (2025). ATE survey 2025: Findings from the annual survey of principal investigators in the National Science Foundation's Advanced Technological Education program. The Evaluation Center, Western Michigan University. <https://atesurvey.evalu-ate.org/>



The ATE Survey

Spark Creative Ideas
for New Activities

Advocate for ATE
Projects and Activities

Proposal Writing

Lee McClure

Program Manager, Research – ATE Survey
lee.mcclure@wmich.edu

ATE Survey Resources:

